

Panel mounted receptacle

Bestelnr. 7538

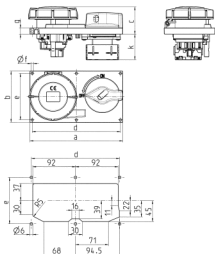


- switched
- with mechanical DUO-interlock
- with highly heat resistant contact carrier and nickel plated contacts
- horizontal design
- with load break switch KH32 3 p

Technische informatie

Ampère	32 A
Polen	4 p
Voltage	400-440 V
Uurstand	3 h
Hertz	50-60 Hz
Aansluittechniek	schroefklemmen
Contacten	standaard
Beschermingsgraad	IP 67
Behuizing materiaal	Kunststof
Gewicht	758 g

Tekeningen



Drawing	Amp.	16			32		
		Poles			Poles		
5 MB 57		3	4	5	3	4	5
Dim. in mm	a	200	200	200	200	200	200
	b	110	110	110	110	110	110
	c	47	50	51	59	59	60
	d	190	190	190	190	190	190
	e	100	100	100	100	100	100
	f	5	5	5	5	5	5
	g	13	13	13	13	13	13
	k max.	56	56	56	56	56	56