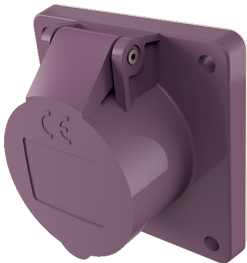


Inbouwcontactdoos

Bestelnr. 1693

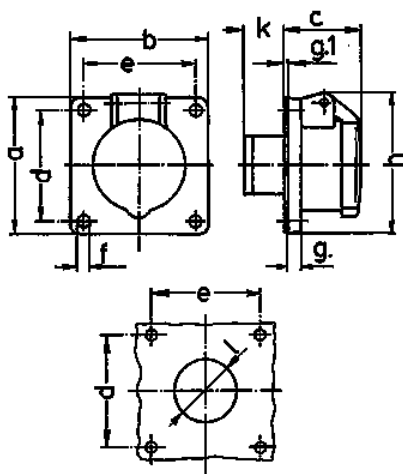


- schroefklemmen
- rechte uitvoering
- tevens voor inbouw in kabelkanaal en inbouwdozen

Technische informatie

| | |
|-------------------|----------------|
| Ampère | 32 A |
| Polen | 2 p |
| Voltage | 20-25 V |
| Hertz | 50-60 Hz |
| Aansluittechniek | schroefklemmen |
| Contacten | standaard |
| Beschermingsgraad | IP 44 |
| Flens | 75x75 mm |
| Bevestigingsgaten | 60x60 mm |
| Gewicht | 128 g |
| Certificeringen | EAC |

Tekeningen



| Tekening | Amp. Polen | 16 | | 32 | |
|-------------------------|---------------|-----|-----|-----|-----|
| | | 2 | 3 | 2 | 3 |
| 1 MB 292 | | | | | |
| Maten in mm | | | | | |
| a | | 75 | 75 | 75 | 75 |
| b | | 75 | 75 | 75 | 75 |
| c | | 44 | 44 | 44 | 44 |
| d | | 60 | 60 | 60 | 60 |
| e | | 60 | 60 | 60 | 60 |
| f | | 5,5 | 5,5 | 5,5 | 5,5 |
| g | | 8 | 8 | 8 | 8 |
| g.1 | | 2 | 2 | 2 | 2 |
| h | | 77 | 77 | 77 | 77 |
| k | | 22 | 22 | 22 | 22 |
| l | | 34 | 34 | 34 | 34 |
| Kabelaansluiting | | | | | |
| van/tot mm² | | 4 | 4 | 4 | 4 |
| | | -10 | -10 | -10 | -10 |