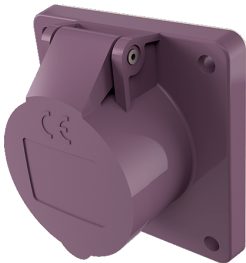


## Inbouwcontactdoos

Bestelnr. 1657

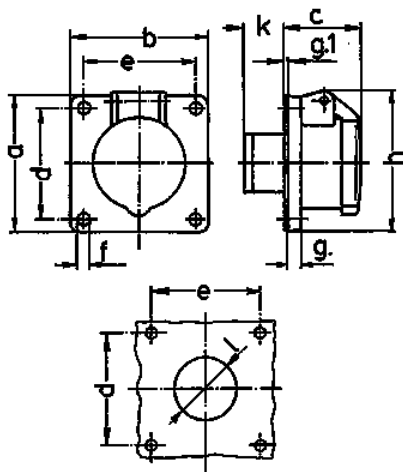


- schroefklemmen
- rechte uitvoering
- tevens voor inbouw in kabelkanaal en inbouwdozen

## Technische informatie

|                   |                |
|-------------------|----------------|
| Ampère            | 16 A           |
| Polen             | 3 p            |
| Voltage           | 20-25 V        |
| Hertz             | 50-60 Hz       |
| Aansluittechniek  | schroefklemmen |
| Contacten         | standaard      |
| Beschermingsgraad | IP 44          |
| Flens             | 75x75 mm       |
| Bevestigingsgaten | 60x60 mm       |
| Gewicht           | 147 g          |
| Certificeringen   | EAC            |

## Tekeningen



| Tekening                | Amp.<br>Polen | 16  |     | 32  |     |
|-------------------------|---------------|-----|-----|-----|-----|
|                         |               | 2   | 3   | 2   | 3   |
| <b>1 MB 292</b>         |               |     |     |     |     |
| <b>Maten in mm</b>      | <b>a</b>      | 75  | 75  | 75  | 75  |
|                         | <b>b</b>      | 75  | 75  | 75  | 75  |
|                         | <b>c</b>      | 44  | 44  | 44  | 44  |
|                         | <b>d</b>      | 60  | 60  | 60  | 60  |
|                         | <b>e</b>      | 60  | 60  | 60  | 60  |
|                         | <b>f</b>      | 5,5 | 5,5 | 5,5 | 5,5 |
|                         | <b>g</b>      | 8   | 8   | 8   | 8   |
|                         | <b>g.1</b>    | 2   | 2   | 2   | 2   |
|                         | <b>h</b>      | 77  | 77  | 77  | 77  |
|                         | <b>k</b>      | 22  | 22  | 22  | 22  |
|                         | <b>l</b>      | 34  | 34  | 34  | 34  |
| <b>Kabelaansluiting</b> |               |     |     |     |     |
| <b>van/tot mm²</b>      |               | 4   | 4   | 4   | 4   |
|                         |               | -10 | -10 | -10 | -10 |